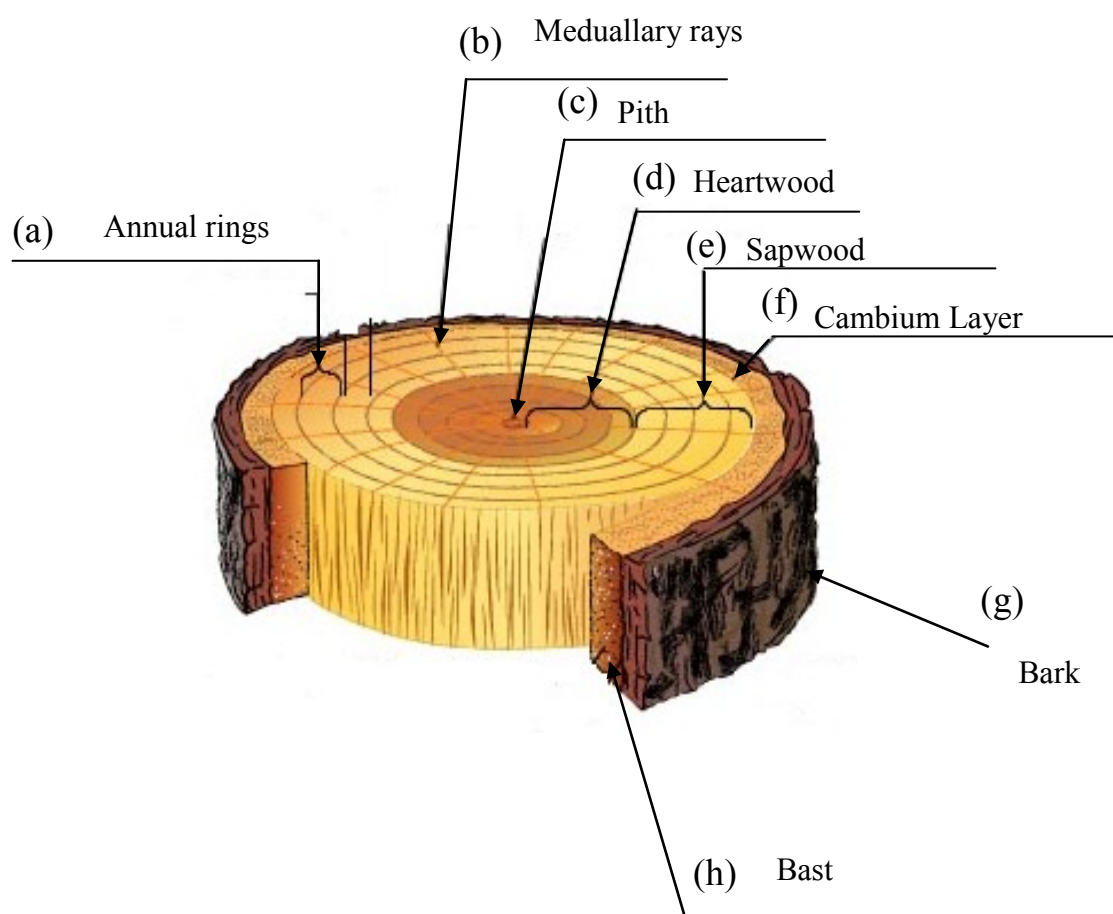


The picture shows a cross section through the trunk of a tree

(i) Label the parts



Explain the function of the following parts

(a) This tells the age of the tree. A ring for every year.

(d) Heartwood is darker than sapwood. It is made of dead cells. This wood is usually stronger than sapwood.

(e) this is the living part of the tree. It is light in colour and is used to transport water and minerals from the roots to the leaves

(f) This is where new cells are created. A new bark cell and a new sapwood cell

(g) The bark is a protective layer for the tree. It protects from animals and weather