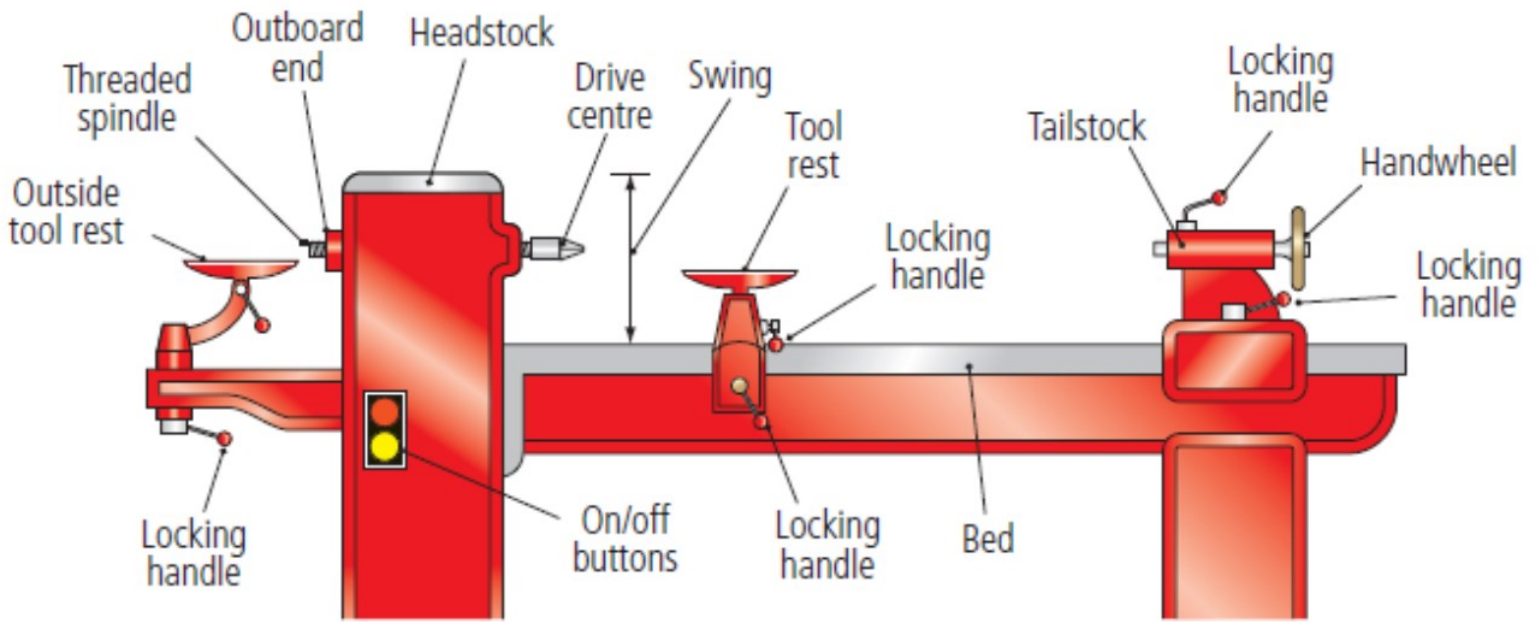


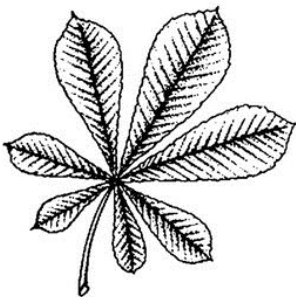
# 1st Year revision Notes



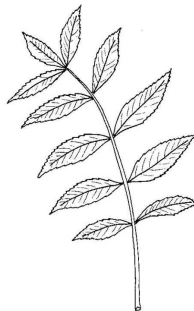
# Lathe Parts



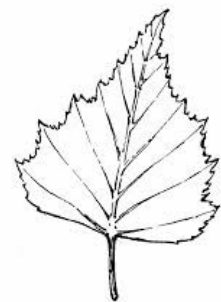
HARDWOOD	SOFTWOOD
Ash	Scots Pine
Beech	Norway Spruce
Sycamore	Sitka Spruce
Oak	Douglas Fir
Horse Chestnut	Pine
Elm	



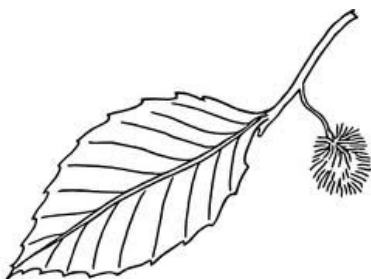
Horsechestnut



Ash



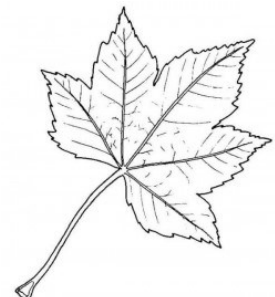
Birch



Beech

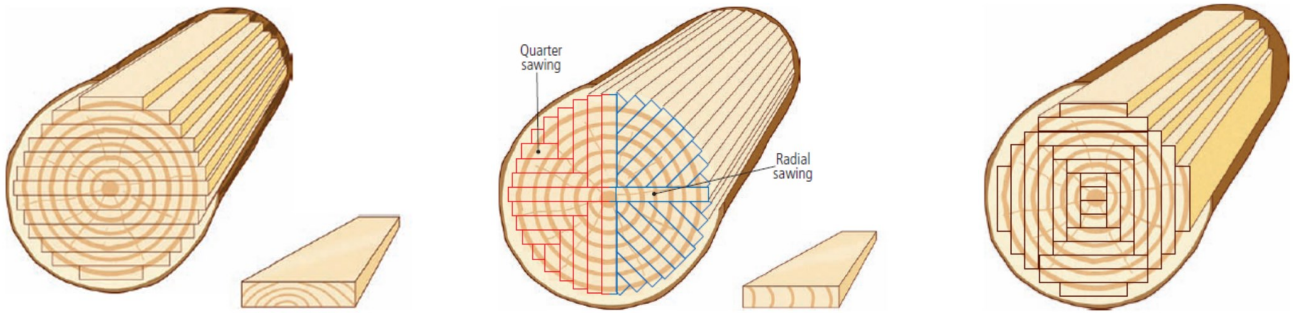


oak



Sycamore

# Conversion



Through & Through

Quarter Sawing

Tangential Sawing

## Through & Through

### Advantages

1. Cheap process
2. Quick Process
3. Little waste

### Disadvantages

1. Weaker boards
2. Can twist & cup

## Tangential Sawing

### Advantages

1. Attractive grain
2. Less likely to twist/warp
3. Strong boards

### Disadvantages

1. Expensive process
2. Labour intensive
3. A lot of waste created

## Quarter Sawing

### Advantages

1. Planks are strong
2. Attractive grain
3. Even shrinkage occurs

### Disadvantages

1. Expensive process
2. Labour intensive
3. A lot of waste created

Notes on coniferous & deciduous trees can be got in the section trees on the website.